

Getting your BYO device ready for school: Intune

Mac version

Intune is a secure mobile management system that allows you to access the school's network. These instructions will show you how to enroll a BYO Mac device into Intune and install an application. This process may take up to 15 minutes to complete.

Before you start, please have ready the email address and password that has been supplied to you by the school. If you do not have this information, you will not be able to successfully complete the installation. Please see your school contact to obtain these details.

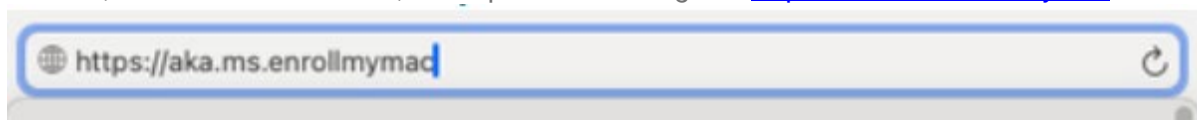
These instructions are for Ventura or later versions of macOS. You may find some of the screens look different to the ones provided here if you have an older version of macOS or there are changes made to Intune.

If the installation fails at any time, please re-open the Intune app and try again.

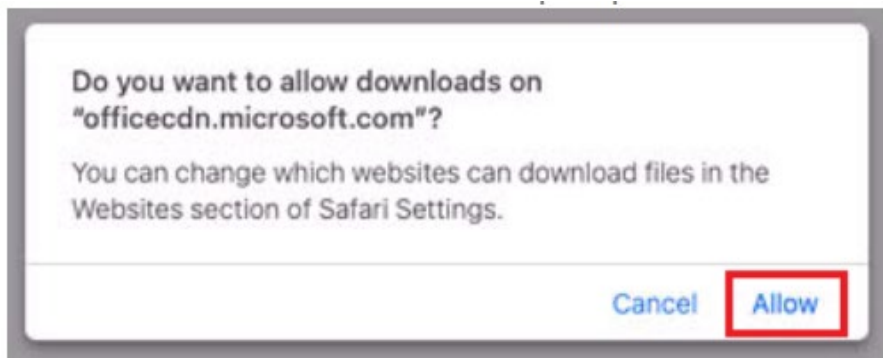
Note: While Intune may allow enrollments of newly released macOS versions, there may be unidentified compatibilities with running specific apps (e.g. BYOx Mapper) on the updated OS. If you have any problems with enrolling your device into Intune or issues with using Intune installed apps afterwards, please see your school IT contact for assistance.

Step 1. Install Intune

To start, connect to the internet, then open Safari and go to: <https://aka.ms/enrollmymac>

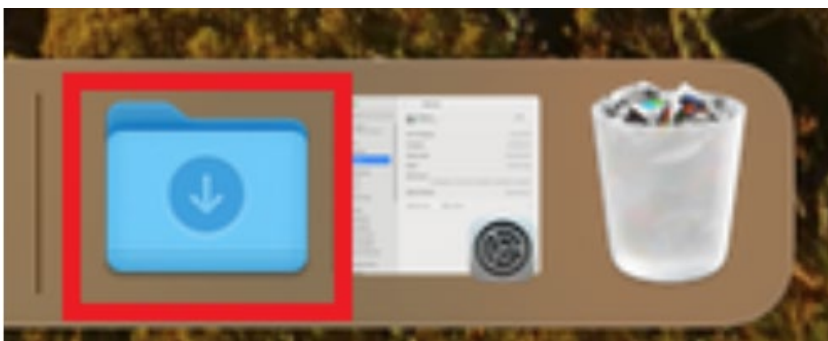


Select Allow to the "allow downloads" prompt

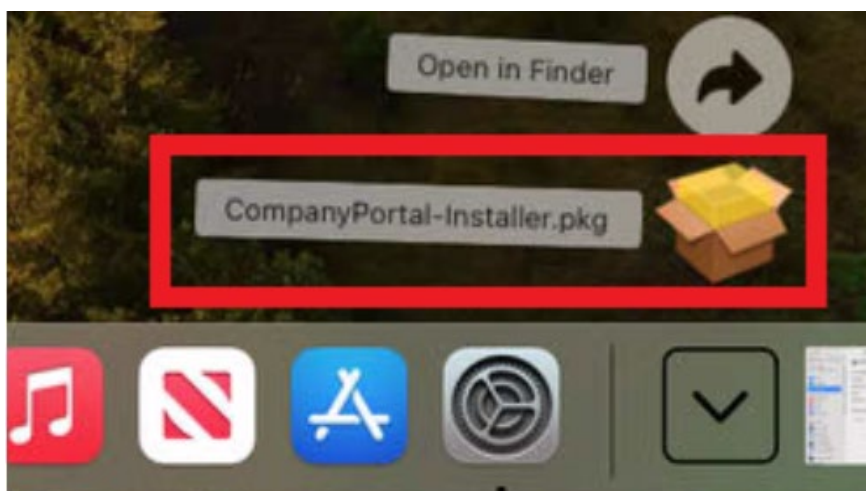


It may take a few seconds to complete.

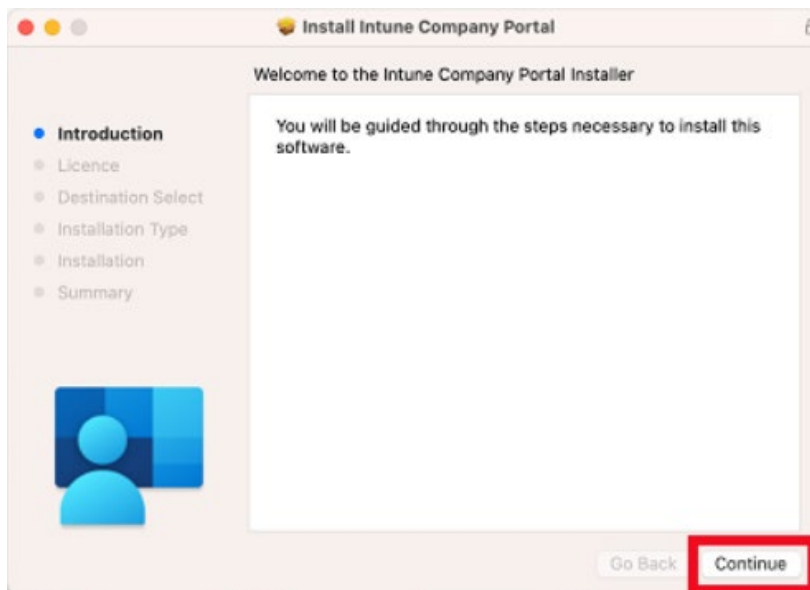
Select the Folder icon at the bottom of your screen.



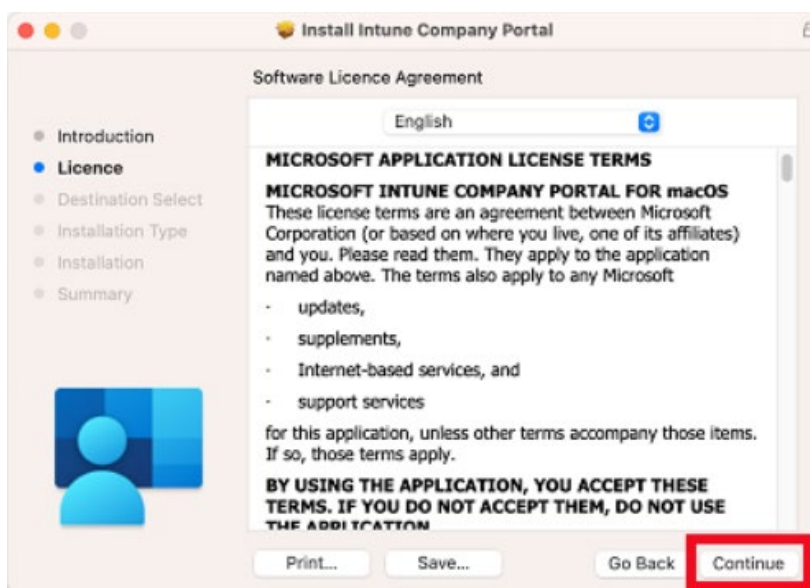
Then select the Open box icon next to the Company Portal Installer file.



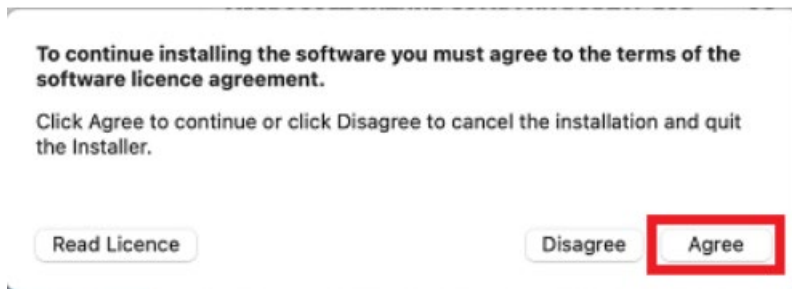
Please select Continue.



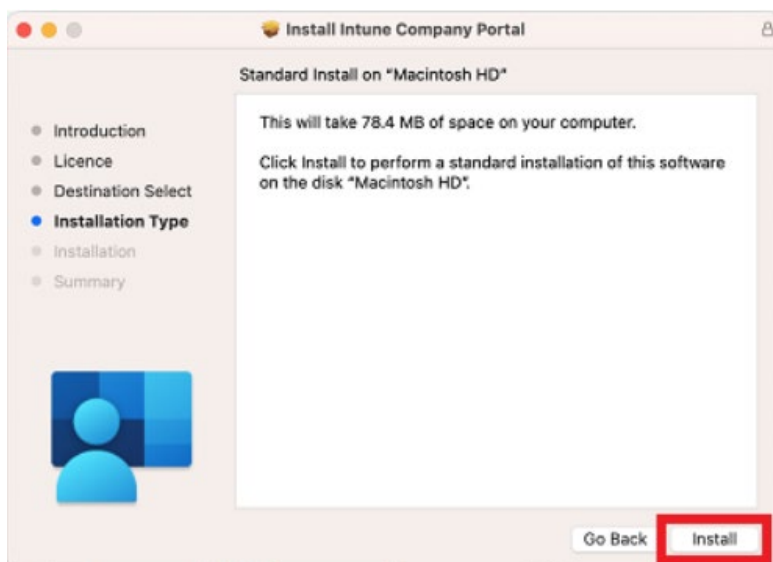
Please read the license terms and then select Continue.



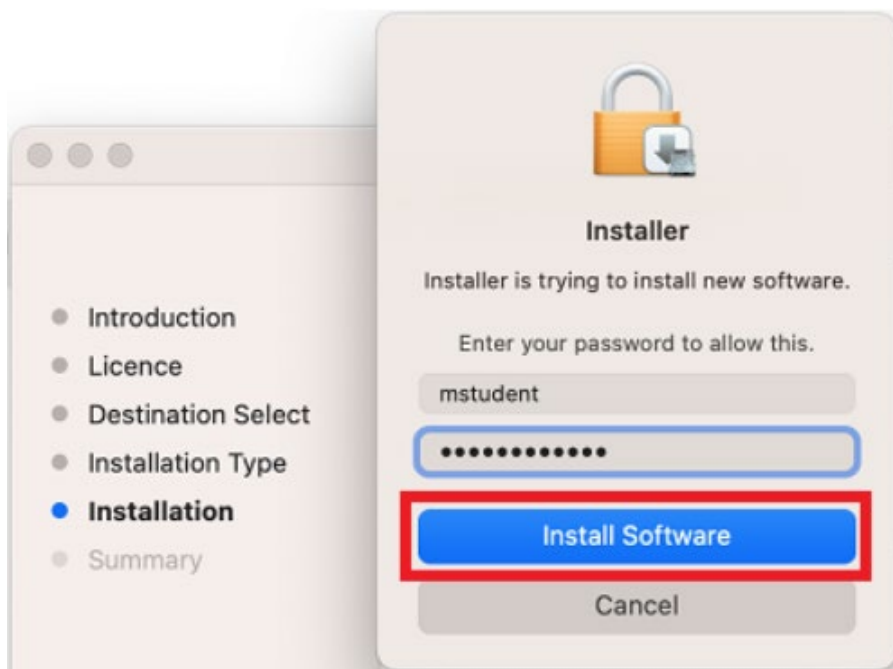
Select Agree to accept the license terms in the pop-up window.



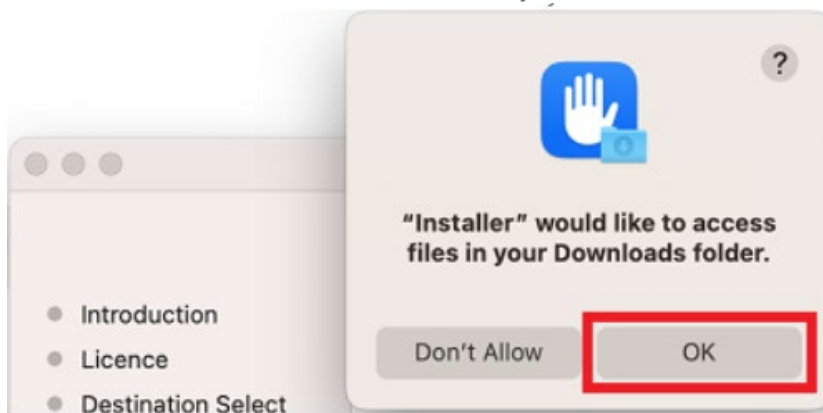
Next, select Install.



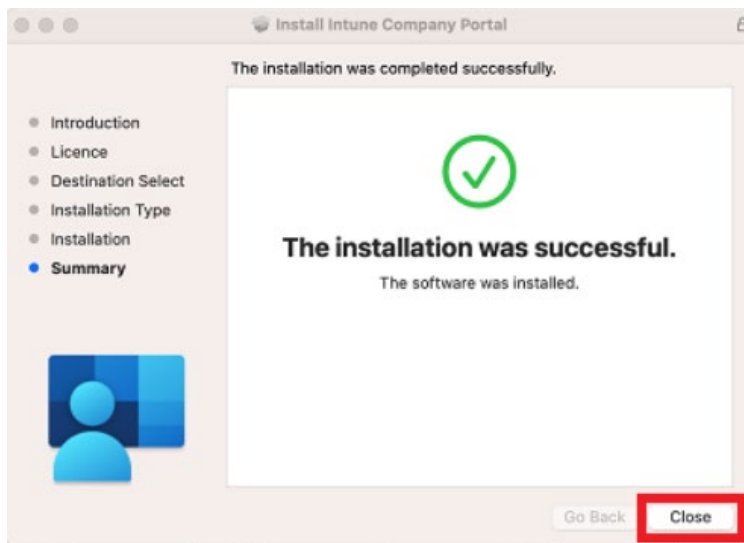
Please enter your username, password of your device and select Install Software.



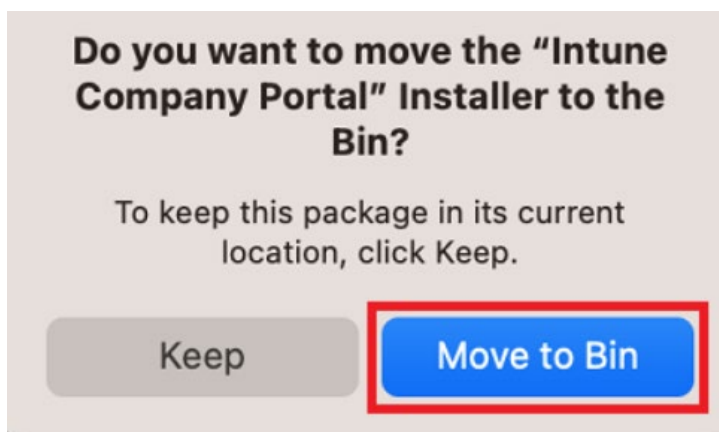
Select OK to allow the Installer access to your Downloads folder



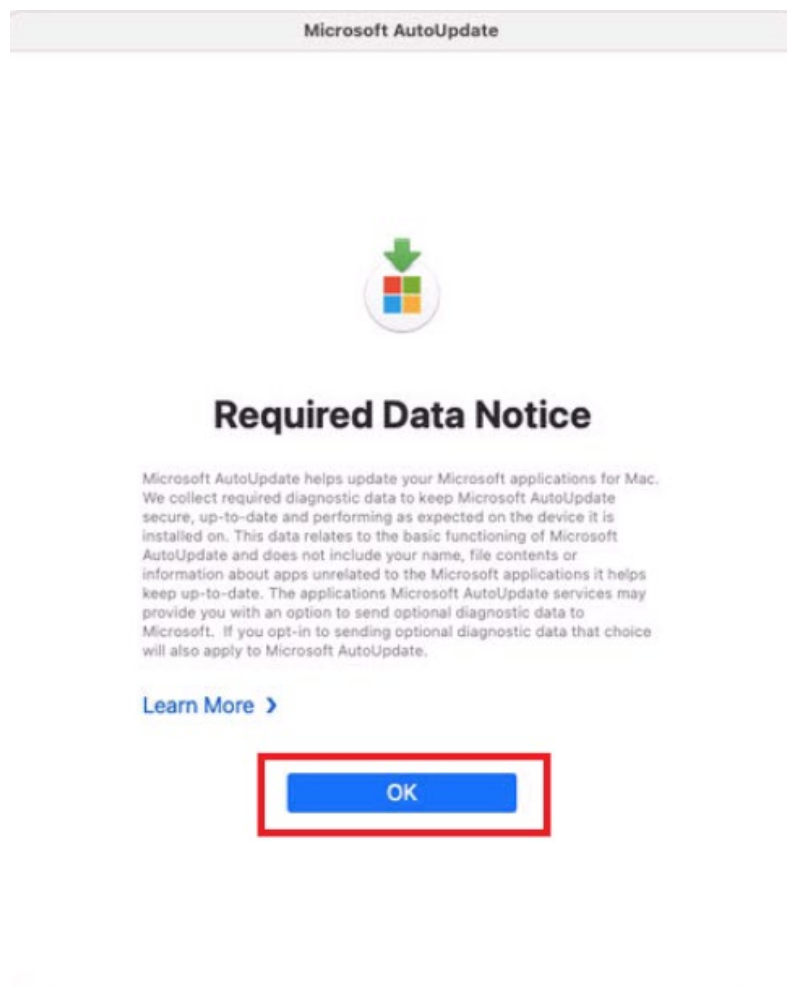
When the installation has finished, select Close.



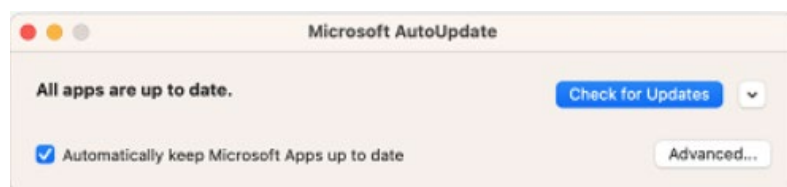
Once the program has completed installing, please select Move to Bin.



Microsoft AutoUpdate will appear. Select OK and then

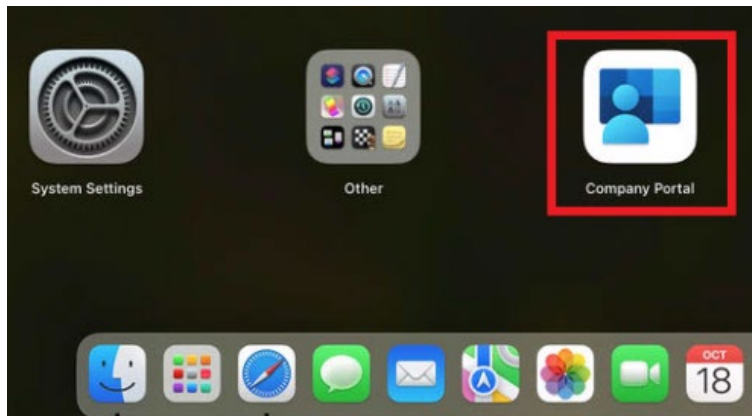


Update if there are updates waiting. You may need to repeat this step a few times. Once there are no more updates, you can close the Microsoft AutoUpdate program.

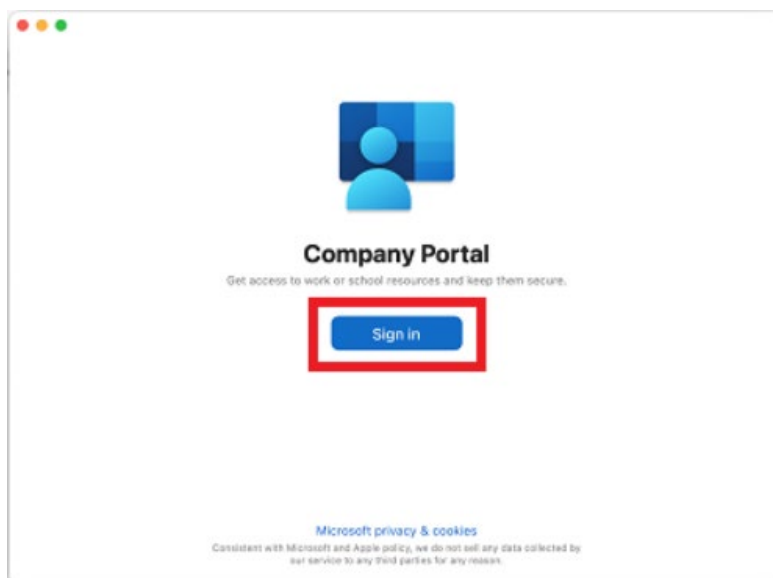


Step 2. Enrol your device into Intune

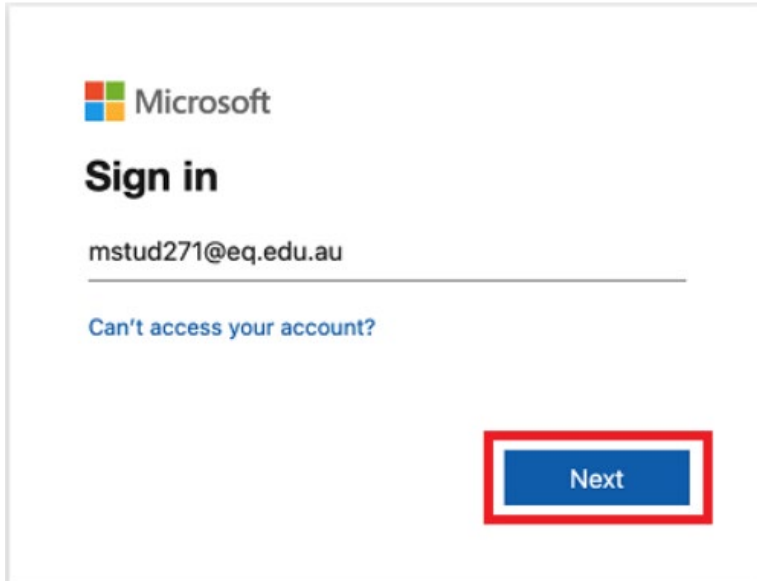
Select Launchpad and then select the Company Portal app.



Then, select Sign in.



Enter your supplied EQ email address and select Next.



Microsoft

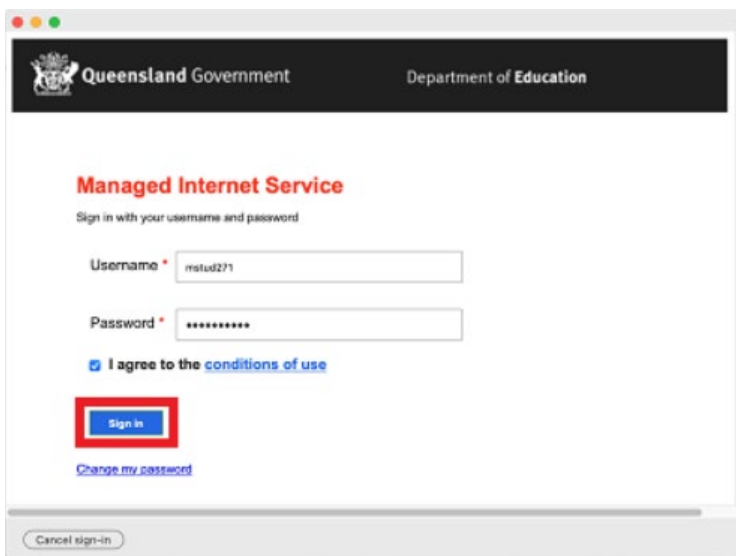
Sign in

mstud271@eq.edu.au

[Can't access your account?](#)

Next

Enter the username, password and accept the terms and conditions. Then select Sign in.



Queensland Government Department of Education

Managed Internet Service

Sign in with your username and password

Username * mstud271

Password *

☒ I agree to the [conditions of use](#)

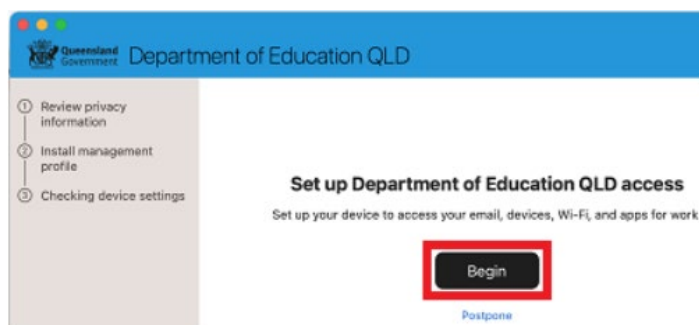
Sign in

[Change my password](#)

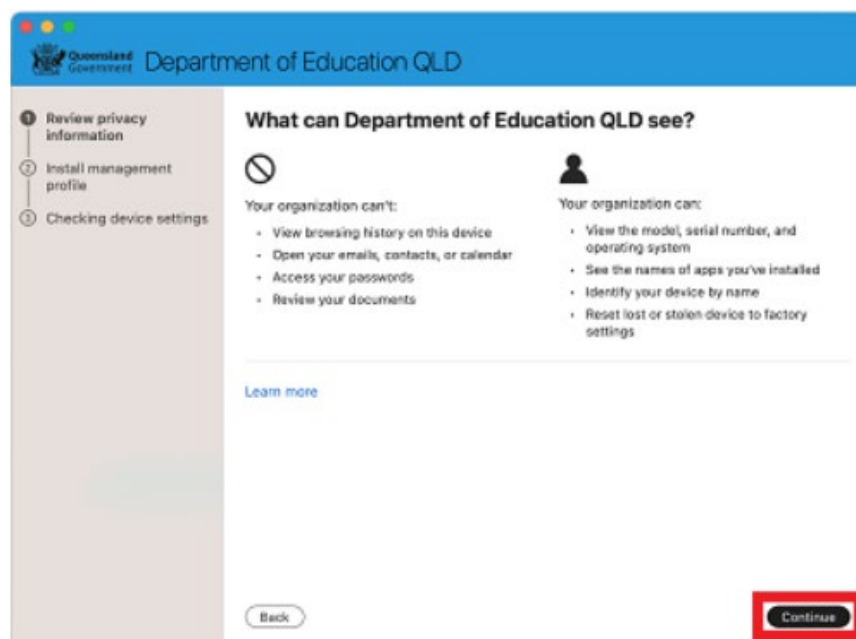
Cancel sign-in



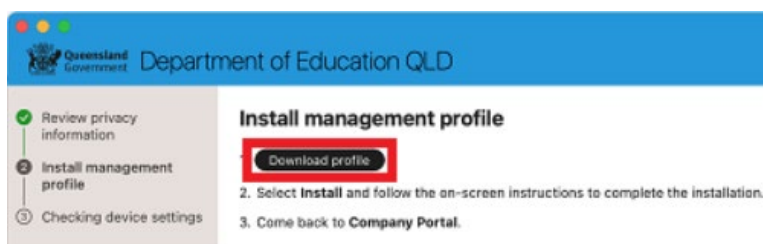
Select Begin.



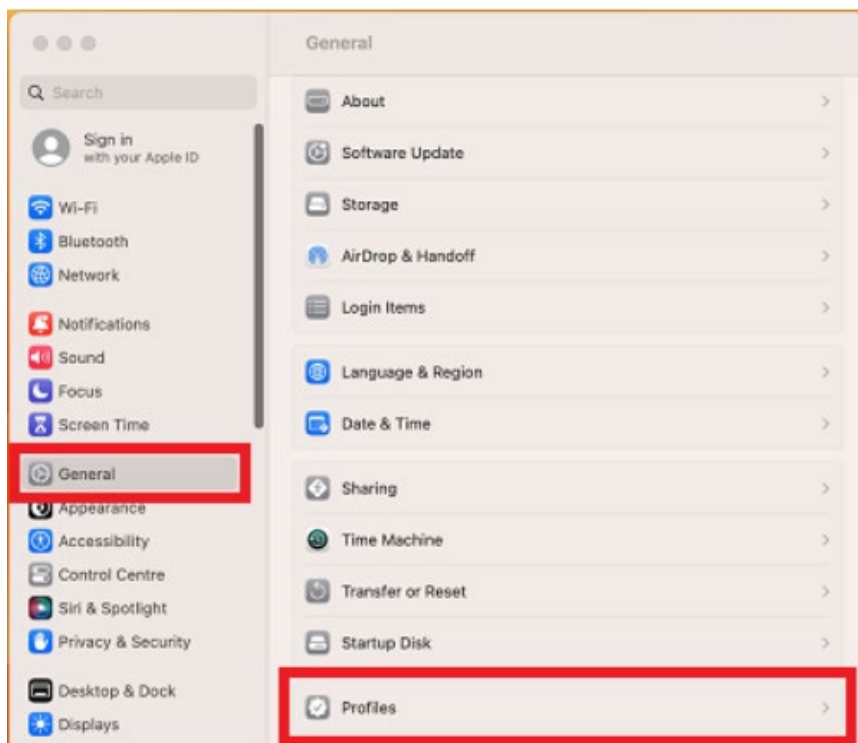
This explains what your school IT administrator can and cannot see on your Mac device. Select Continue.



Select Download profile.



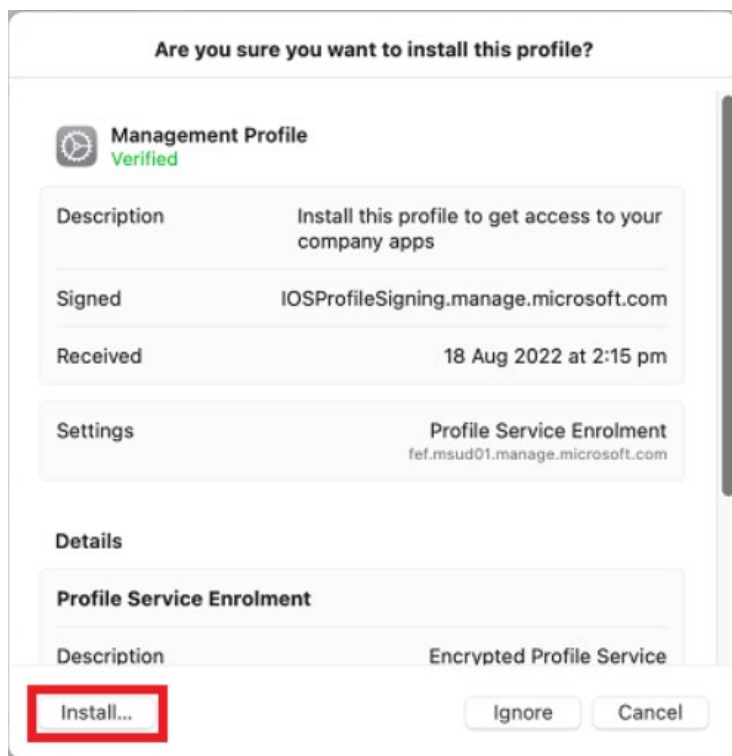
Open System Preferences then go to General and then Profiles



Double click the Management Profile



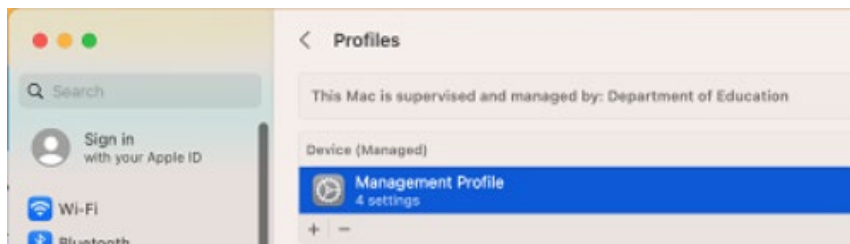
Select Install...



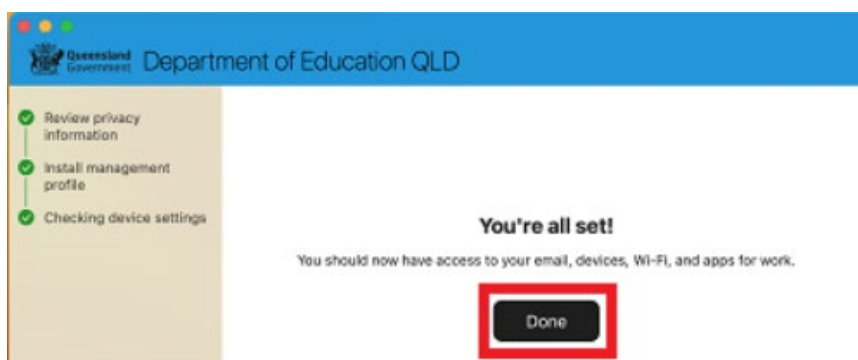
Enter the username and password for your device and select Enrol. It may take a few minutes for the management profiles to be installed.



When complete, it will show that it is now supervised and managed by the department.



Go back to Company Portal and wait as it updates the device settings, then select Done. It may take up to 15 minutes to finish installing. You can use the device in the meantime but please keep it connected to the internet.



Close the Company Portal.
You have now finished installing Intune.

Enrolment Video Guide: [Intune – MacOS enrolment video](#)

